



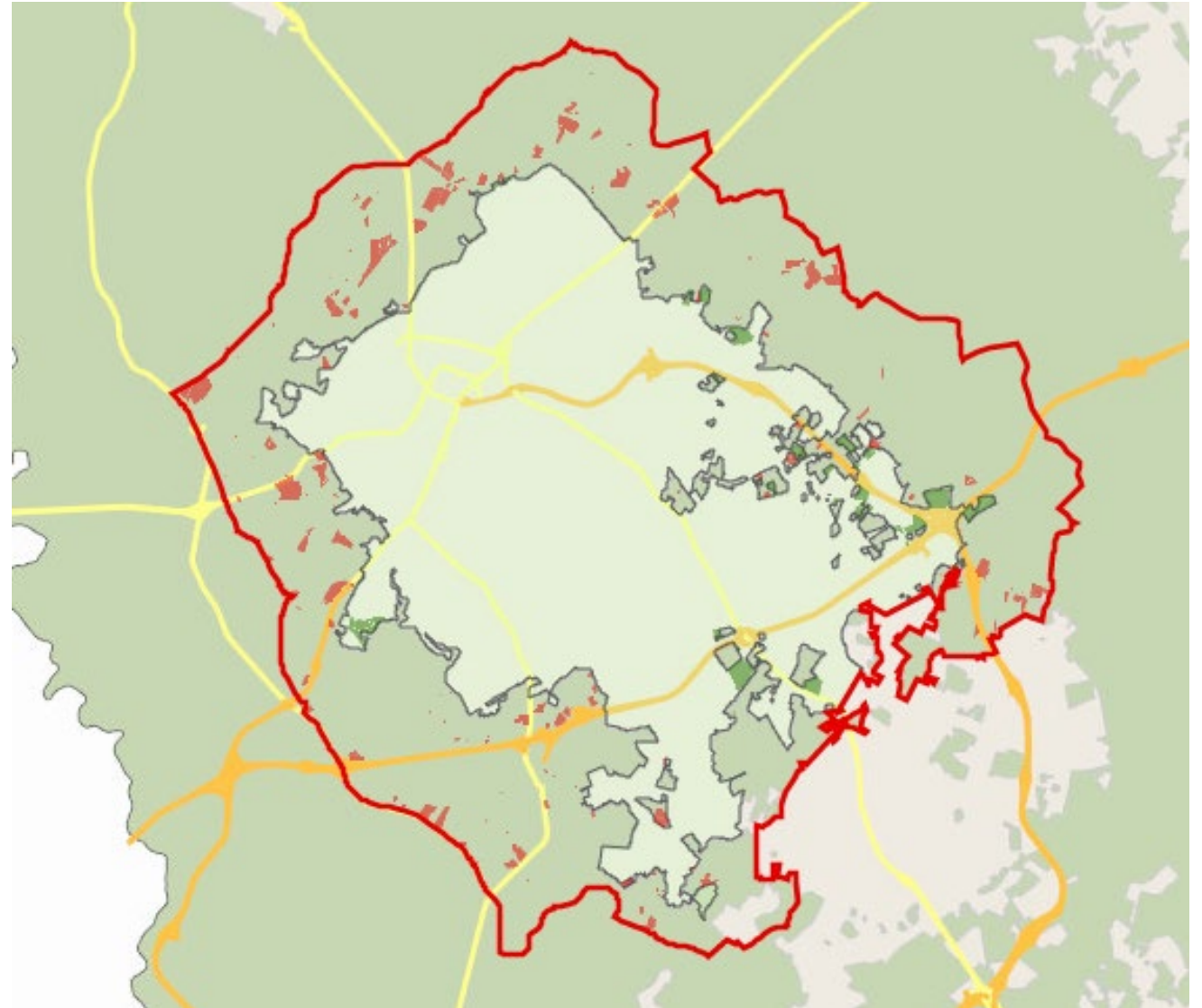
# Annexation Water Covenant Update Resolution



## Current Covenant Requirements

Developments within a 1-mile buffer or within Annexation Perimeter, except for four (4) lot or less subdivisions, that require a new meter or an extension or expansion of services are required to sign a *Declaration of Covenant to the City of Greenville and Customer Connection Agreement*.

## Current Annexation Perimeter and Annexation Covenant Properties





## Covenant Expansion Request

1. Expansion of the buffer to 1.5 miles (dark green line).
2. Clarification that covenant properties can only annex into City of Greenville.

Note: The 1.5-mile buffer is not stationary but moves with future annexations.

